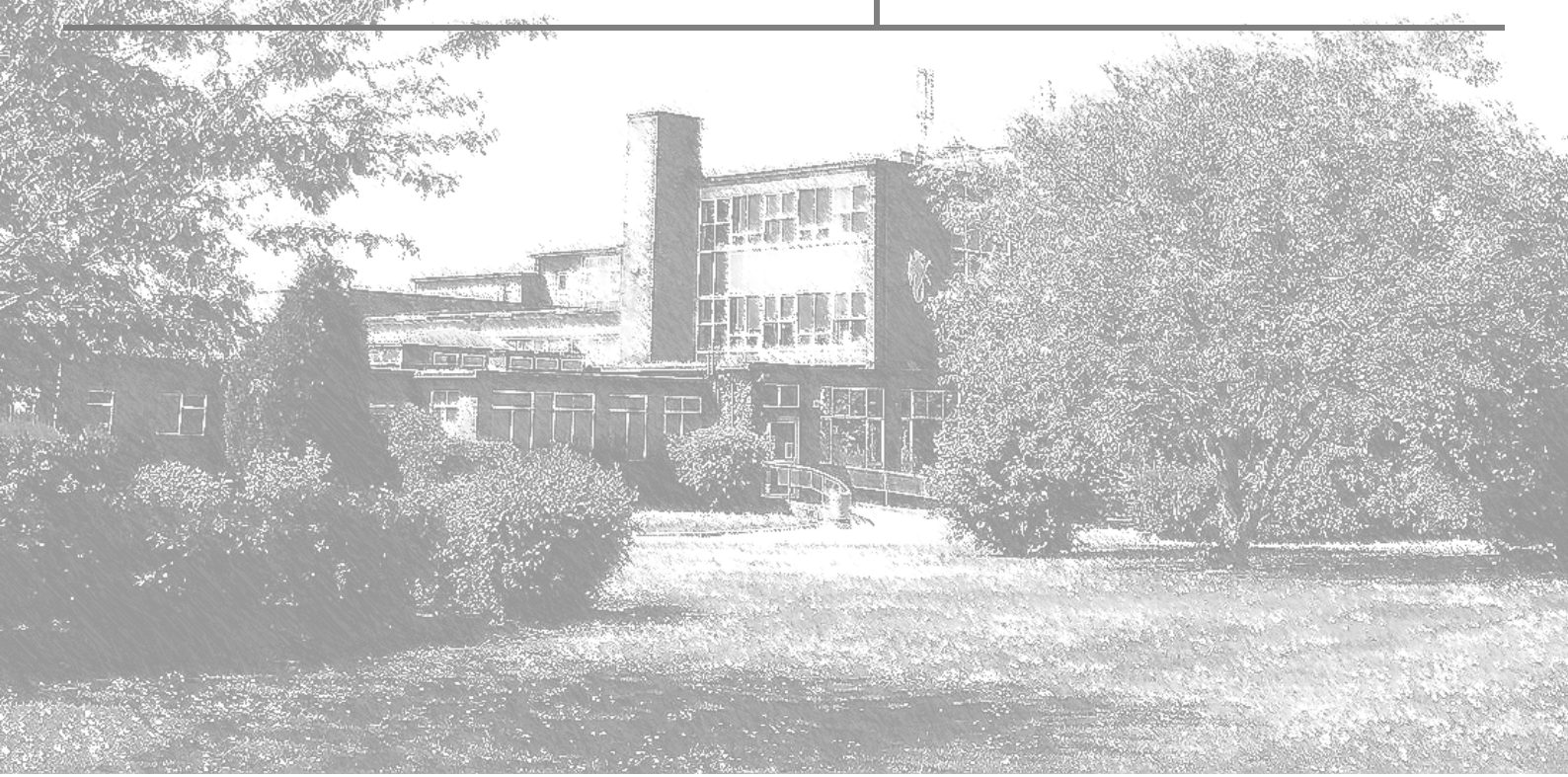




Determined
Admission
Arrangements
for Entry to
Year 7 and 12

For admission in
SEPTEMBER 2019



AIMS

We seek to fulfil the needs of learners in a caring, happy environment, enabling them to realise their true potential as young people and citizens.

We aim to enable our learners to:-

PREPARE for adult life in a happy, caring and purposeful environment

ACHIEVE their full potential regardless of individual need

CCARE for everyone and encourage respect and tolerance

ENJOY education and rejoice in success



DETERMINED ADMISSIONS ARRANGEMENTS FOR ENTRY TO YEAR 7 SEPTEMBER 2019

These arrangements are based on the School Admission Code and the School Admission Appeals Code. The Whitby High School is an 11-18 foundation school. The Governing Body is the admissions authority and the admission limit for entry to Year 7 from September 2018 is 300 places. Other year groups have a PAN of 270. This does not include the Sixth Form.

The Governors' admission policy on the allocation of places at The Whitby High School follows the Local Authority model. Advice on the appeals procedure, should the parents not be satisfied with the allocation, appears in the booklet " **Applying for a Secondary School Place – Year 7 2019** ". The booklet is sent in September to the parents of Cheshire children in the secondary transfer age group and is available to other parents on request. Appeals forms for the school are available from the school directly on request.

Oversubscription Criteria

In prioritising applications from parents expressing a preference for the school, the following criteria are used:

- 1** Cared for children'. A 'cared for child' is a child who is in the care of the local authority or provided with accommodation by that authority (as defined in section 22 of the Children Act 1989) or a child who was previously looked after but ceased to be so because they were adopted, or became subject to a child arrangement, or special guardianship order.
- 2** Children for whom there are particular medical or social reasons, which, in the Governors' view, justifies admission to a particular school. Supporting evidence from a registered professional, such as a medical practitioner, psychologist or social worker, must be provided which sets out the particular reasons why the school in question is the most suitable school and the difficulties that would be caused if the child had to attend another school. A panel of

Governors will consider the information presented and will determine whether the evidence is sufficiently compelling to apply this criterion to the application. The Governors, if it is considered appropriate, will seek the views of the School Doctor or Educational Psychologist in the event of parents requesting admission on medical or psychological grounds. This criterion cannot be considered if the required documents have not been received. Few applications fall within this category.

- 3 Siblings – Students with brothers or sisters, step-brothers or step-sisters, half-brothers and half-sisters living together as part of one household, already attending the preferred school, and expected to continue at the school in the following school year.
- 4 Children resident within the designated catchment zone of the school. Children will be classed within this category if they and their parents/carers are resident within the area served by the school on the closing date for applications.
- 5 Students not resident within a school's local catchment area but attending a school designated as a partner/feeder school for admissions purposes, as out-of-area students.

The designated partner/feeder schools are:

Capenhurst CE Primary
Ellesmere Port Christchurch CE Primary
Meadow Primary
Sutton Green Primary School
Whitby Heath Primary School
William Stockton Primary
Woodlands CE Primary

- 6 Pupils for whom there are exceptional personal/domestic circumstances presented by the parents that justify at the time of application, in the school's view, admission to the school.
- 7 Students living nearest to the school (Distance) are measured using Ordnance Survey mapping in conjunction with Local Land and Property Gazetteer (LLPG) to identify each property and each school. A straight line measurement in miles is taken from the place of residence to the preferred school to calculate the distance.'

Where the school can accommodate some, but not all students qualifying under one of the preceding criteria, priority will be given to students having regard to the subsequent criteria. Where there are limited places available and two or more applications that cannot be differentiated between using the criteria, a random allocation tie breaker drawn by lots will be used, supervised by someone independent of the School. In the case of multiple births it may be necessary to offer over PAN in order that children from multiple births can attend the same school.

Late applications for places will be considered after all applications received on time. Waiting lists for the normal admission rounds will be held in admission criteria order and not on a 'first come, first served' basis. Any vacant places will be reallocated to children held on a school's waiting list. The waiting list will be kept open until the end of the Autumn term. Placing a child's name on a waiting list does not affect the statutory right of appeal.

Repeat applications will not be considered within the same school year, unless the parents' or the school's circumstances have changed significantly since the original application was made. Proof of address may be required. Governors retain the right to withdraw places offered on the basis of fraudulent or intentionally misleading information.

The Catchment zone for the school can be viewed by visiting www.cheshirewestandchester.gov.uk > Schools and Education > Catchment Areas > The Whitby High School.

Places will be allocated in advance of the family arriving in the area for children of UK service personnel, if accompanied by an official government letter which declares a relocation date and a unit postal address or quartering area address for considering the application against the school's oversubscription criteria.

Where parents or carers have shared responsibility for a child the place of residency will be determined as the address where the child lives for the majority of the week (e.g. where the child wakes up between Monday and Friday). Full details of the arrangements must be included on the application form to enable the Governors to decide which address to use for admission purposes.

Parents and Carers MUST inform the school immediately of a change of address, even if details of a future change or residency were included on the application form as this may change a child's priority for the school.

The normal admission round refers to applications made for admission into the relevant age group i.e. Year 7 in a secondary school where admission would be the normal point of entry to the school in September.

In-year applications are those received after the first day of the school year into the relevant age group or into any other year group. Waiting lists will not be held for in year applications but the school retains an expression of interest list. When a place becomes available it will be offered to those on the expression of interest list in accordance with the oversubscription criteria.

If your application for a place is unsuccessful you will be informed of the reason and given information about the appeals process.

Entry to Year 12

The external admission number for places in Year 12 is 30. Students wishing to join Whitby High School in Year 12 must, however, meet the academic criteria set for their intended courses. A level courses require a minimum of 5A*-C grades at GCSE or equivalent except in exceptional circumstances e.g. illness, in which case regard will be made of prior achievement. Individual subjects may set a minimum requirement grade, which is indicated in the sixth form prospectus.